

1. B - Used for sitting

The word formed is CHAIR which is used for sitting.

2. B - R

AUSTRALIA after removing vowels (A,E,I,O,U) becomes STRL;
Second last alphabet from left will be R

3. B - b

4. B - 9

Possible combinations:

With Red Coat:

(Black Trousers - White Shirt), (Black Trousers - Green Shirt), (Black Trousers - Black Shirt) : total - 3

With Black Coat:

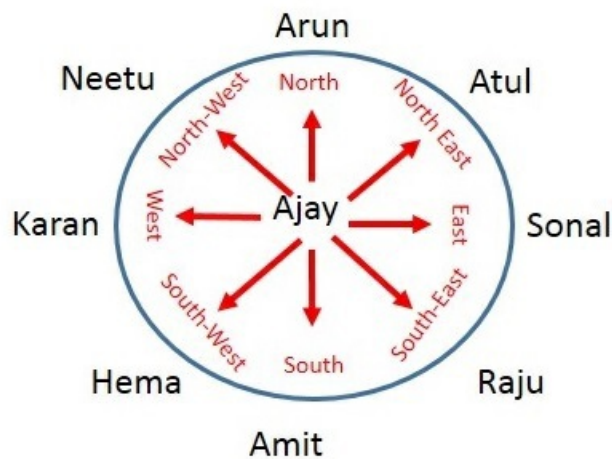
(Black Trousers - White Shirt), (Black Trousers - Green Shirt), (Black Trousers - Black Shirt)

(Blue Trousers - White Shirt), (Blue Trousers - Green Shirt), (Blue Trousers - Black Shirt) : total - 6

Total combinations possible = 9

5. A - Atul-Karan-Hema

Refer figure for explanation



6. C - 3

Rule is : $7 \times 3 - 8 = 13$

$4 \times 6 - 5 = 19$

$2 \times 4 - 5 = 3$

7. C - 71384

WASTE = 73524;

W = 7, A = 3, S = 5, T = 2, E = 4

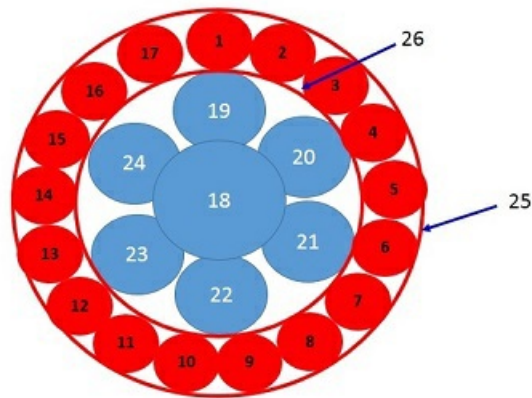
HILL = 1988

H = 1, I = 9, L = 8

WHALE = 71384

8. C - 26

Refer solution figure for explanation



9. D - 256

Each number is equal to multiplication of previous two numbers:

First number = 1

Second Number = 2

Third Number = $1 \times 2 = 2$

Fourth Number = $2 \times 2 = 4$

Fifth Number = $2 \times 4 = 8$

Sixth Number = $4 \times 8 = 32$

P = $8 \times 32 = 256$

10. B - b

Try to place and fit each of the option.

□

11. B - Mohit is correct

12. B - A is incorrect and B is correct

Muscles have the ability to contract and expand. Muscles along with skeletal system help in movement of body parts and locomotion.

13. D - 4

Lotus and Water Lily have hollow stems.

14. B - Canines

Canines are four in numbers and are used for tearing the food. Incisors are eight frontal teeth. They are broad and flat. They are used for cutting and biting our food.



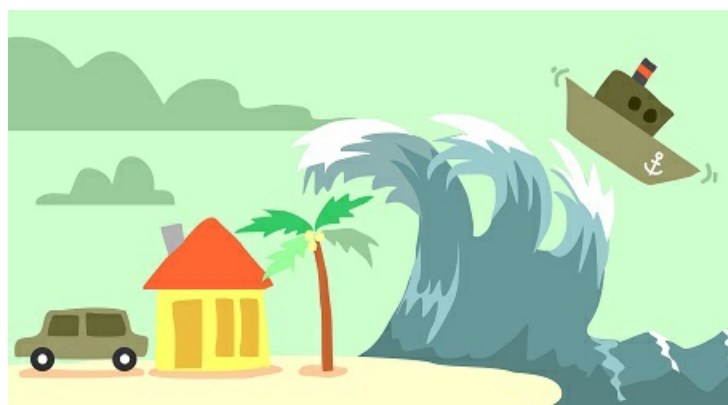
15. C - cocoon

Moth's lifecycle : egg -> caterpillar -> pupa + cocoon - > adult moth.

16. D - A and D

17. A - Micky

Earthquake is a natural calamity. It causes the land to shake. Its intensity is measured in richter scale. Earthquakes high intensity can cause severe damage. Earthquake around oceans and sea can cause tsunami.



18. C - Polaris

Polaris is the brightest star of Ursa Minor constellation. It is also known as the north star or pole star.

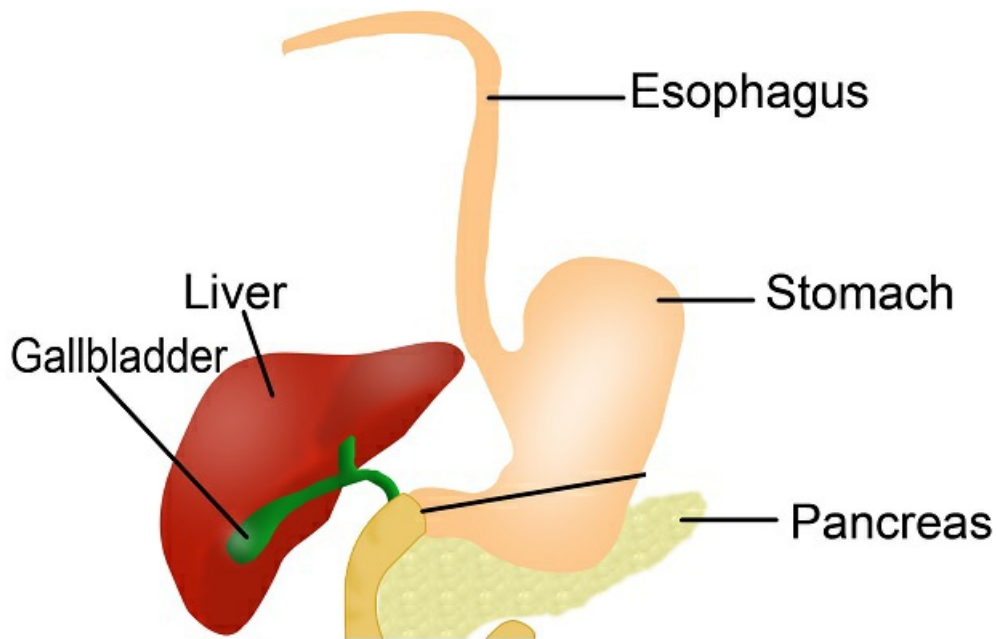
19. C - A, B and C

Major diseases caused by mosquitoes are :

- a) Dengue
 - b) Malaria
 - c) Zika
 - d) Chikungunya
-

20. D - Both are incorrect

The liver is the largest gland in the human body. Pepsin is secreted by the stomach.



21. B - A is incorrect and B is correct

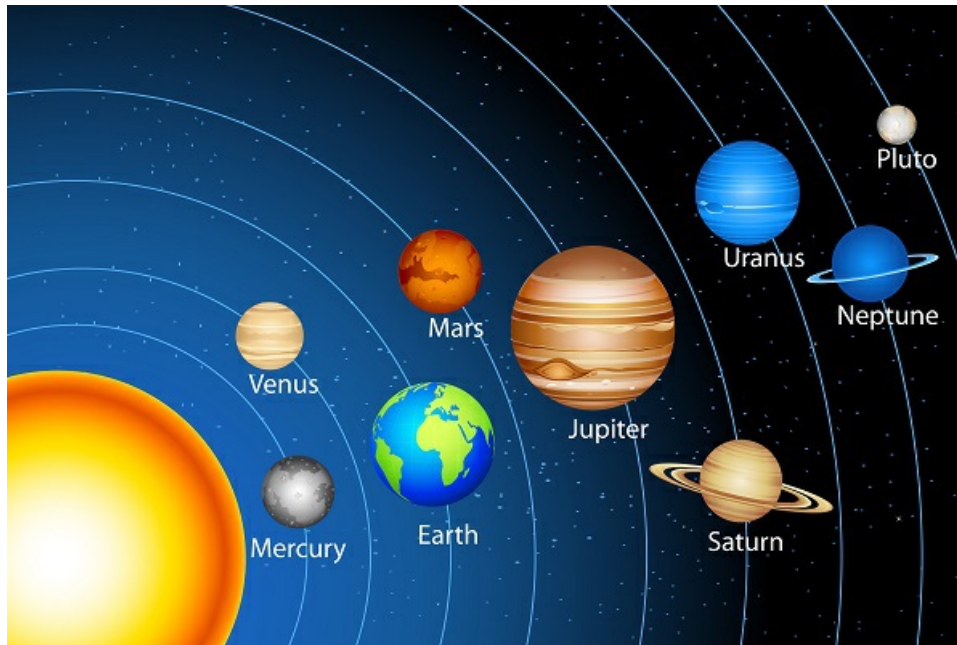
22. A - Lina is correct

None

23. C - A and D

Though Mercury is closest to the sun yet Venus is the hottest planet. It traps sun's heat with the help of cloud of carbon dioxide around it. Earth has only one natural satellite - Moon.

23. C - A and D



24. C - C

Birds have beaks in place of teeth. Shape and size beak depend upon the kind of food the bird eats. Woodpecker has a chisel-shaped beak to cut a hole in trees or to dig out insects from trees' barks. Kingfisher has long, pointed beak to catch fishes. Grain eating birds like sparrows and pigeons have a strong cone-shaped beak to grinding and breaking seeds and grains.

25. D - A-Pull, B-Gravity, C-Push, D-Friction

26. A - A-2, B-1, C-3, D-4

None

27. B - Digestion of food

28. C - B and C

Paper bags and jute bags are environment-friendly as they are made from natural resources and are biodegradable.

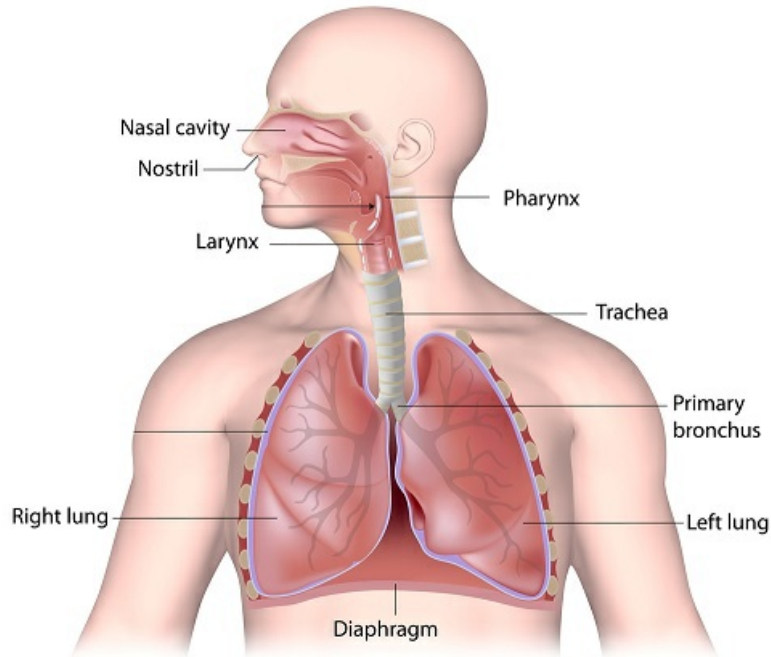
29. B - A, C and D

Scavengers like hyena, vultures, crows etc feed on dead animals and they break down organic matter into smaller pieces. Decomposers like bacteria, fungi, mushrooms, termites etc feed on organic matter and break them further, Nutrients are returned to the soil to be again used by plants.

30. B - B

Except villi all are part of respiratory system. Respiratory system begins at nose or mouth. We inhale oxygen-rich air and exhale carbon dioxide rich air. Air goes to our lungs via trachea. Trachea is a long hollow tube that connects larynx and pharynx to lungs. Lungs have thin tube like structures known as bronchioles. Bronchioles have small ball like sacs at the end called as alveoli. Exchange of gases takes place at alveoli.

The Respiratory System



31. B - Heating makes air inside garbage bag less dense.

32. C - Group A materials have low melting point and Group B materials are strong.

Plastic and rubber have low melting point. Wood is a bad conductor of heat where as metals are good conductor of heat. Wood and metals are strong.

33. D - Lunar cycle starting from waxing gibbous

As the moon visibility is increasing initially in the graph it is waxing. As the moon size is close to full visibility (somewhere around 75% visibility) it has to be gibbous. So graph shows lunar cycle starting from waxing gibbous.

34. D - Sam and Riya

Liver is largest gland but it secretes bile juice. Pepsin and HCL are secreted by stomach.

35. C - Both are correct

Solids are generally denser than liquids and thus are heavier but water is an exception. Ice is less dense than water. Ice is lighter than water and so ice floats on water.
